

TOYOTA

COROLLA

LIFTBACK™ AND SPORT COUPE



YOU ASKED FOR A FUN CAR THAT'S INCREDIBLY FUNCTIONAL.
YOU GOT IT TWICE.



Corolla Liftback Deluxe



Corolla Liftback SR-5



Corolla Sport Coupe Deluxe



Corolla Sport Coupe SR-5

THE NEW COROLLA LIFTBACK

Corolla Liftback and Corolla Sport Coupe—two great new functional cars that are also fun to drive. They round out Toyota's quality line of Corollas.



The Liftback's wide-opening rear door and fold-down split rear seat provide a cargo area that's spacious and versatile.

activity where you might need extra cargo carrying capacity.

The tremendous versatility of the Corolla Liftback continues with a unique fold-down split rear seat. Fold it all the way down and you've made enough room to bring as many as 20 full-size bags of groceries home from the market.

Or just fold down half the split rear seat and you're still left with enough room to carry just about anything you want. Long awkward loads fit easily into the cargo space created, and there's still a seat left in the back to carry a passenger.

With all that cargo and passenger carrying space in back, you might begin to think we sacrificed somewhere

Functional Fun.

Take the new Corolla Liftback, for example. We designed it to be stylishly sporty looking, and yet incredibly functional. It's a practical sedan with two doors, plus a wide-opening rear liftback that acts as a third door. The third door opens into a spacious cargo area that comes in handy for running errands, picnicking, camping, or any other



SR-5 models offer full instrumentation and a cockpit type dash to put all controls within easy reach.

else to get it. But up front, there's still enough interior roominess for a couple of six-footers to comfortably stretch out.

Economical to Operate. The new Corolla Sport Coupe, like its brother the Corolla Liftback, has eye-stopping, sporty good looks inside and out. But don't let its racy lines fool you into thinking it might be costly to operate. The Sport Coupe, as well as the Liftback, are both powered by the same economical and reliable 1.6 liter overhead valve engine that powers most Corollas around the world.

Two Exciting New Models. The Liftback and Sport Coupe are available in two excitingly different models:

SR-5 and Deluxe. Like all Corollas, they're both equipped with quality features like MacPherson strut front suspension, for good road handling. And power-assisted front disc brakes for sure stopping. Plus unitized body construction, with welds instead of bolts, to help



All models come with steel-belted radial tires and styled steel wheels.

THE NEW COROLLA SPORT COUPE

electric clock and an AM radio. Outside, the Sport Coupe SR-5 has body side striping to make it look even racier.

Deluxe models have dressy white sidewall tires and a stylish 3-spoke woodgrain steering wheel as standard equipment.

Plus More Corolla Standard Equipment. You'll be pleasantly surprised to learn most Corollas are equipped with other niceties that aren't often found as standard equipment on other cars. Such as fully reclining Hi-back front bucket seats, adjustable to 120 different positions. And an electric rear window defogger, nylon loop pile wall-to-wall carpeting and flip-out rear windows. Plus shiny chrome bumpers.



All Corollas have fully reclining Hi-back front bucket seats, adjustable to 120 different positions.

Toyota Quality. Toyota Quality isn't limited to just one model. It's built into every single Toyota that comes off the assembly line. One of the reasons nine out of every ten Toyota cars sold in America are still on the road today.

So whatever your motoring needs, be it a 2 or 4-door sedan, a 5-door wagon, a hardtop, the new Corolla Liftback or the new Corolla Sport Coupe, there's a Toyota Corolla to suit your taste and pocketbook.

We believe so strongly in the superior quality of Toyota automobiles that we're prepared to make this statement: If you can find a better built small car than a Toyota... buy it.

*See the EPA statement on specification page.

eliminate squeaks and rattles.

Liftback and Sport Coupe SR-5 models are standard equipped with 5-speed transmissions. The fifth gear serves as an overdrive for good gas mileage! It also lets the engine run quieter and slower in fifth gear to save wear and tear when driving at cruising speeds. Deluxe models offer a 4-speed transmission as standard equipment, or a 3-speed automatic as an available option.

Extras At No Extra Cost.

The new Corolla Liftbacks and Sport Coupes offer sporty styled steel wheels (mag-type on the SR-5) riding on steel-belted radial tires.

Inside the SR-5's, you'll find a cockpit type dash with console, plus full instrumentation to help you keep track of what's going on under the hood. There's an electric tachometer, so you always know how fast your engine's running. And gauges to keep you informed on things like oil temperature and pressure, and water temperature. Plus an ammeter, an



SR-5 models come standard equipped with a 5-speed overdrive transmission.

STANDARD EQUIPPED FUN.

Liftback and Sport Coupe Corollas include all Corolla standard equipment plus:

SR-5 Models

- 5-speed Overdrive Transmission
- Full Instrumentation that includes Gauges for Oil Temperature and Pressure, Water Temperature, and an Ammeter
- Electric Tachometer
- Wide

- Black Sidewall Steel-belted Radial Tires
- Mag-type Styled Steel Wheels with Bright Steel Trim Rings
- Electric Clock
- Pushbutton AM Radio
- Knitted Vinyl Seats
- 4-spoke Sporty Steering Wheel
- Full Console with Arm Rest
- Wide-opening Rear Cargo Door (Lift-

- back only)
- Fold-down Split Rear Seat (Liftback only)
- Special Body Side Striping (Sport Coupe only)
- Easy-loading Trunk Design (Sport Coupe only)

Deluxe Models

- 4-speed Synchromesh Transmission
- White Sidewall Steel-belted Radial Tires

- Styled Steel Wheels
- 3-spoke Woodgrain Steering Wheel
- Wide-opening Rear Cargo Door (Liftback only)
- Fold-down Split Rear Seat (Liftback only)
- Electric Tachometer (Sport Coupe only)
- Easy-loading Trunk Design (Sport Coupe only)

MAKE YOUR COROLLA EVEN MORE FUN.

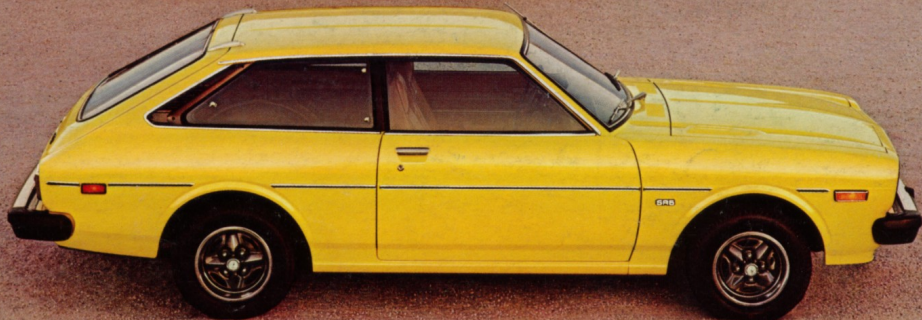
1. **Add An Automatic Transmission.** If you don't like shifting for yourself, you'll like our sturdy 3-speed Automatic. Available on Deluxe models only.
 2. **Add Some Factory Air Conditioning.** To keep you comfortable in any summer weather from mildly warm to sweltering hot.
 3. **Add Some Music.** Our superb-sounding AM Radio is standard equipment on the SR-5's and available as optional equipment on Deluxe models. Or go hi-fi Corolla with our AM/FM Stereo, or our 8-track Stereo Tape Deck.
 4. **Add An Electric Rear Window Washer/Wiper.** For a clean and clear rear window in rainy weather. Available on Liftbacks only.
- Plus a whole lot more that's available from your local Toyota dealership.

***EPA Statement**

*EPA gas mileage figures for each Corolla model are not stated in this brochure. See your Toyota dealer for EPA gas mileage results. **Remember** EPA gas mileage figures are estimates. The actual mileage you get will vary depending on your driving habits and your vehicle's condition and equipment.

Specifications:	Liftback	Sport Coupe
Exterior Dimensions		
Wheelbase	93.3"	93.3"
Length	170.0"	168.3"
Width	63.6"	63.6"
Height	52.0"	52.0"
Tread (Dlx front)	51.2"	51.2"
(Dlx rear)	50.6"	50.6"
(SR-5 front)	52.0"	52.0"
(SR-5 rear)	52.6"	52.6"
Interior Dimensions		
Headroom (front)	34.2"	34.0"
(rear)	36.6"	34.2"
Shoulder Room (front)	50.4"	50.4"
(rear)	50.6"	50.5"
Leg Room (front)	42.1"	42.1"
(rear)	32.8"	32.8"
Curb Weight w/Man. Trans.		
49 States (Dlx)	2276 lbs.	2232 lbs.
(SR-5)	2326 lbs.	2270 lbs.
California (Dlx)	2307 lbs.	2251 lbs.
(SR-5)	2353 lbs.	2289 lbs.
Capacities		
Trunk	—	6.2 cu. ft.
Both seats down	23.9 cu. ft.	—
Tire sizes		
Deluxe	165 SR 13 WSW	165 SR 13 WSW
SR-5	175/70 HR 13 BSW	185/70 HR 13 BSW

Colors: White, Yellow, Red, Medium Blue, Orange Metallic, Silver Metallic, Dark Green Metallic and a bright new color, Pure Yellow. Specifications, equipment and prices are subject to change without notice.



YOU ASKED FOR IT. YOU GOT IT. **TOYOTA**